



Table of Contents

- 1-About the brand
- 2-App Setup & Features
- 3-Neck Interface Module Overview
- 4-How to refill the lubricant
- 5-Cleaning and maintenance guide
- 6-Proper storage methods
- 7-Body movement range
- 8-Things to Avoid
- 9-Warranty & support

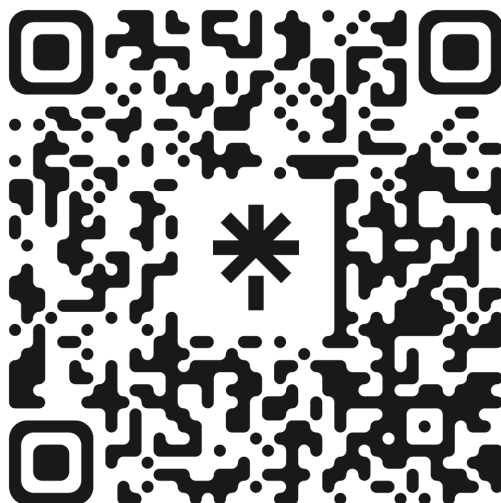
1-About the Brand

Dripana is a premium smart torso brand focused on immersive interaction, intuitive response, and long-term reliability.

Official Website: <https://www.dripana.com/>

Connect With Us

Scan the QR code below to access our **Linktree page**, where you can find all official Dripana social media channels, updates, and additional resources in one place.



2-App Setup & Features

Download the app

iOS Users (Apple Store)

Open the App Store on your iPhone.
Search for “Dripana”.
Tap Download and install the app.

Android Users (Google Play)

Open the Google Play Store.
Search for “Dripana”.
Tap Install to download the app.

Connecting the App to Your Torso

Please note that the torso does not contain an internal battery. All electronic functions require a continuous external power connection to operate.

- Connect the torso to a power source using the provided Type-C cable.
- Ensure the power connection is stable, and the torso is powered on.
- Enable Bluetooth on your mobile device.
- Open the Dripana App and select “Connect Device.”
- Choose your torso from the device list.
- When the indicator shows Connected, all electronic features are ready for use.

App Features Overview

All features are designed to function independently or work together seamlessly, allowing you to customize the experience based on your preferences.

1. Manual Vaginal Contraction Control

Manually adjust how the internal canal contracts in real time.

- Control contraction **strength**, from gentle to intense
- Control contraction **frequency**, from slow pulses to rapid movements
- Responds instantly to slider or button inputs in the app

This mode allows you to precisely control rhythm and tightness at any time.

2. Manual Lubrication Release (Auto-Lube Switch)

Control the built-in lubrication system with a simple on/off switch.

- When enabled, the torso releases a **small amount of lubricant at regular intervals**
 - Helps maintain smooth, low-friction use
 - Eliminates the need to pause and manually reapply lubricant
-

3. Adjustable Moaning Sounds

Customize audio feedback to enhance immersion.

- Multiple moaning voice styles and sound profiles available
- Moaning automatically synchronizes with thrusting frequency
- Faster movement results in **more frequent and intense audio feedback**

This feature adds realism and responsive sound interaction during use.

4. **Automatic Adaptive Mode**

In this mode, the system responds automatically to your movements without manual adjustment. Based on thrusting speed, the system dynamically adjusts:

- Contraction frequency
- Contraction strength
- Lubrication release interval

Adaptive behavior:

- Faster thrusts → stronger contractions, higher frequency, shorter lubrication intervals
- Slower thrusts → gentler, slower, more relaxed responses

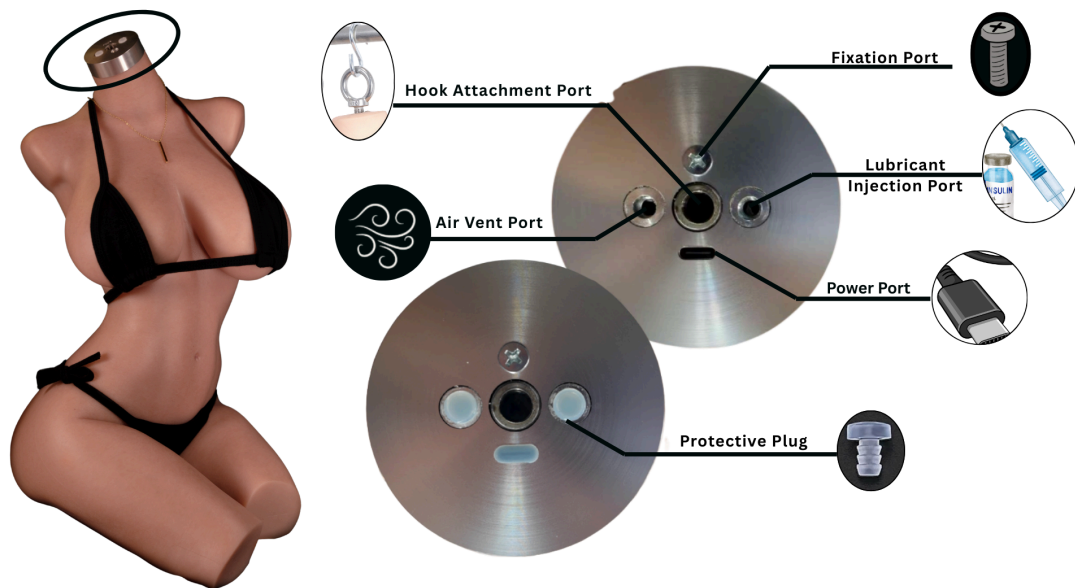
This mode delivers a naturally responsive, hands-free interactive experience.

3-Neck Interface Module Overview

The neck area of the torso is equipped with a **metal protective cover**, which integrates all functional interfaces into a single, discreet location. This design helps improve usability while protecting internal components.

Under the metal cover, you will find the following interfaces:

What Are These Ports?



- **Power Port** – Used for charging the internal system.
- **Lubricant Injection Port** – For injecting compatible lubricant into the internal channel system.
- **Air Vent Port** – Allows air release during use or maintenance to ensure smooth operation.
- **Hook Attachment Port** – Designed for attaching a hanging hook, which can be used to suspend the torso for storage, drying, or maintenance.
- **Protective Plug** - protects the port from water, dust, and debris when not in use.

⚠️ Avoid water contact with the neck interface area, and do not allow moisture to enter any of the ports.

4-How to Refill the Lubricant (Automatic Refill System)

Your torso is equipped with an **automatic lubricant intake system**, allowing the lubricant to be drawn in automatically through the app. Please follow the steps below to refill the lubricant safely and correctly.

What You Need

- Water-based lubricant
 - The included refill tube
 - Dripana App (installed and connected)
-

Refill Steps

1. Prepare the Lubricant

Place the water-based lubricant in a stable container. Ensure the lubricant is clean and free of debris.

2. Remove the Protective Plug

- Locate the lubricant port at the neck connector of the torso.
- Carefully remove the protective plug and set it aside.

3. Connect the Refill Tube

- Screw one end of the refill tube securely into the lubricant port at the neck connector.
- Insert the other end of the tube directly into the lubricant container, making sure it is fully submerged.

4. Start Automatic Refill

- Open the app and select **Refill Lubricant**.
- The system will automatically draw lubricant into the internal reservoir.

5. Wait until the extraction process is complete

- The refill process will stop automatically once the internal tank is full.
- No manual pressure or monitoring is required.

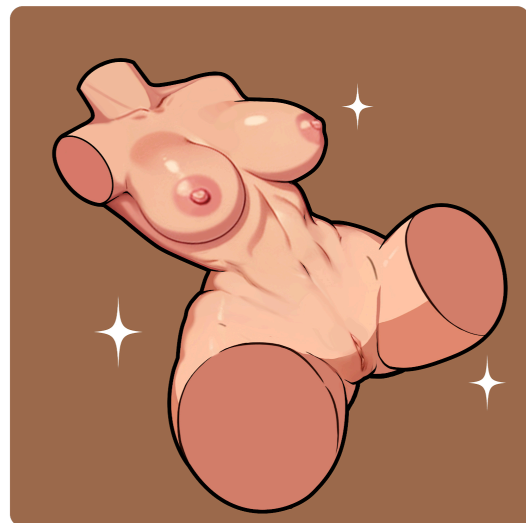
6. Disconnect and Seal

- Remove the refill tube carefully.
- Reinstall the protective plug firmly onto the lubricant port.
- Wipe away any excess lubricant if necessary.

5-Cleaning and Maintenance Guide for Sex Torsos

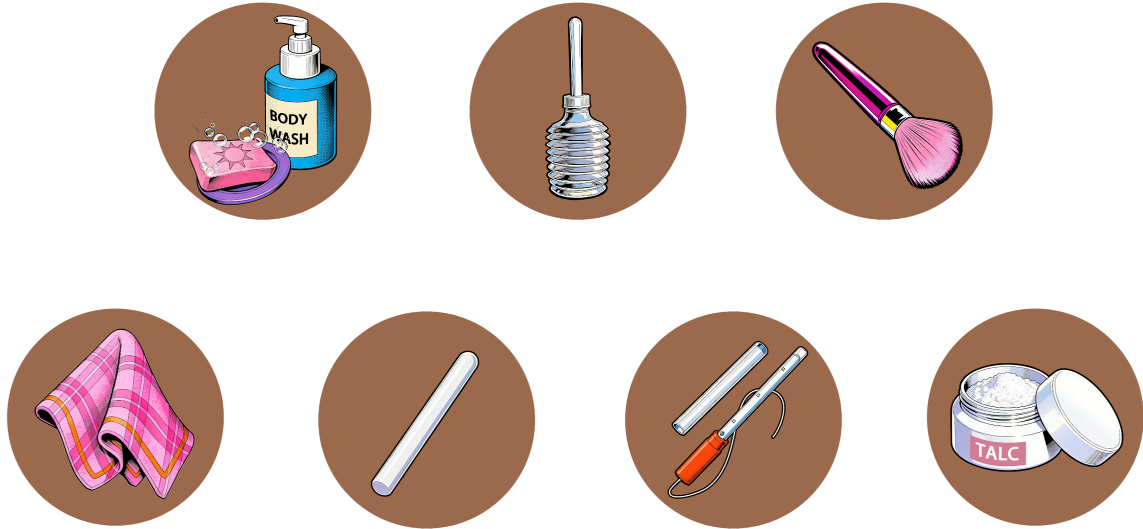
Proper cleaning and care don't just protect the material—they keep every experience smooth, safe, and lifelike for years. Below is the complete step-by-step guide on how to clean, dry, sterilize, and store a silicone sex torso the right way.

Why Cleaning Matters?



Silicone is non-porous and highly durable, making it easier to clean than TPE and more resistant to bacteria. Still, regular maintenance is essential to ensure hygienic use, soft and realistic texture, long-term durability, and no odor or discoloration over time.

Recommended Cleaning Tools



- **Warm water + mild body wash** or diluted soap: For cleaning the exterior and tunnel surfaces, removing odors and residues.
- **Sex Doll Washer**: For flushing the internal tunnel and achieving deep cleaning.
- **Makeup Brush**: For applying renewal powder.
- **Soft Towel**: For wiping and pat-drying.
- **Drying Stick**: For removing internal moisture.
- **UV Sterilizing Heating Rod**: For preventing bacterial or mold growth.
- **Renewal Powder / Talcum / Corn Starch / Baby Powder**: To keep the surface smooth and prevent stickiness after cleaning.

Detailed Cleaning Steps

We strongly recommend cleaning your sex doll before initial use, as it contributes to maintaining your reproductive health and ensures the most comfortable and realistic experience.

The first-time activation cleaning uses the same steps as routine cleaning after use, so simply follow the full cleaning guide below for both situations.



Step 1: Wash & Rinse

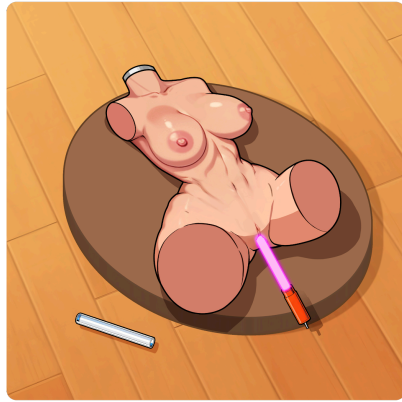
Use warm water (below 50°C / 122°F) and a small amount of mild soap or body wash. Gently wipe to remove odor or residue. Use a Sex Doll Washer to flush the tunnel with a soap mixture 3–5 times, then rinse 5–7 times with clean water.

⚠ The neck area contains an electrical connector. Avoid direct water contact with this area. Do not rinse or soak the neck opening to prevent water from entering the internal components.



Step 2: Towel Dry & Internal Drying

Gently pat dry with a soft towel. Do not rub or twist. Insert a drying stick for up to 30 minutes. Gently press the belly and hips to help release extra water.



Step 3: Sterilize & Air Dr

After drying, insert a UV sterilizing rod to prevent bacteria. Leave the torso in a dry, ventilated area away from sunlight.



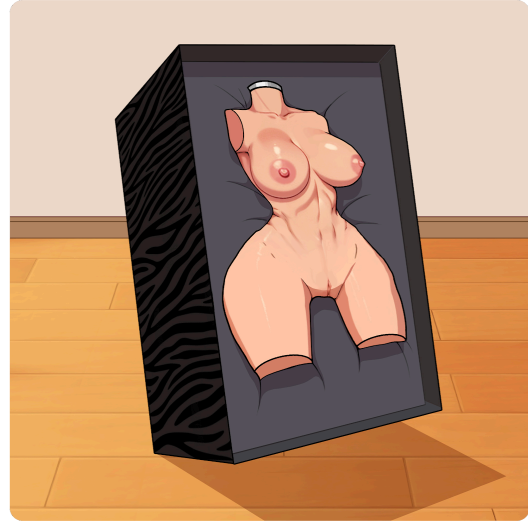
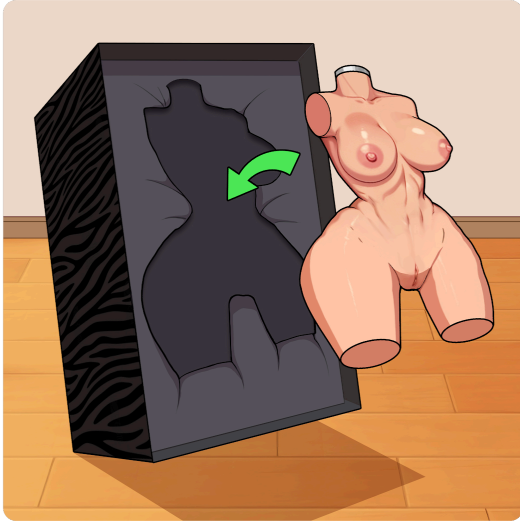
Step 4: Apply Powder

Once fully dry, dust lightly with powder using a brush to keep the surface soft and smooth.

6-Proper Storage Methods

Correct storage prevents deformation, dust accumulation, mold, and color fading — and keeps the torso in its best condition over time.

Here are two recommended storage methods :



Method 1 - Reuse the Original Packaging Box

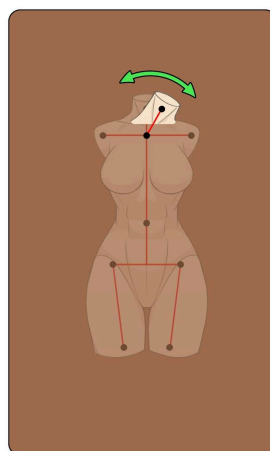
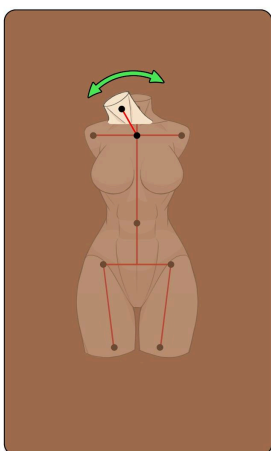
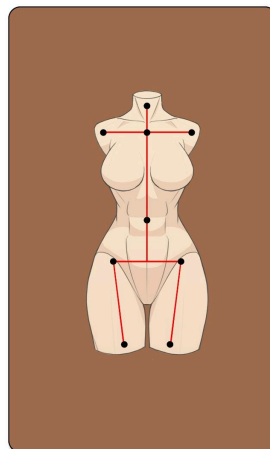
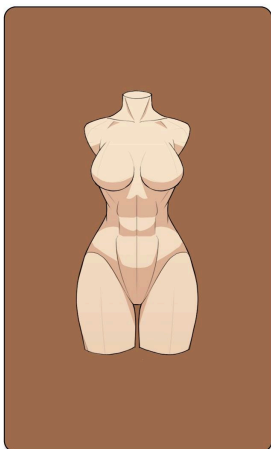
- Lay the torso into the shaped foam insert so the body naturally fits the contour.
- Close the inner display box securely.
- For extra protection, place the display box into the outer shipping box.
- Ensure that the doll is stored with straight limbs and in a lying position.

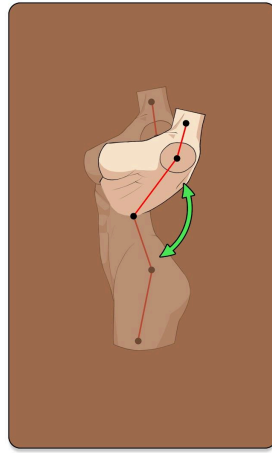
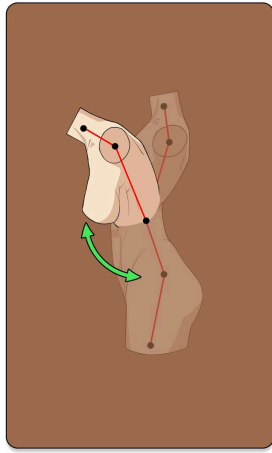
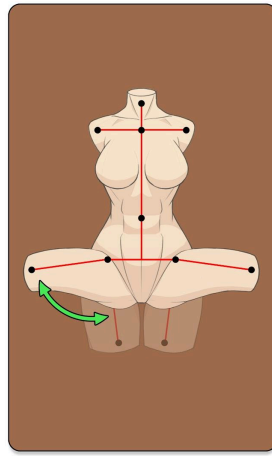
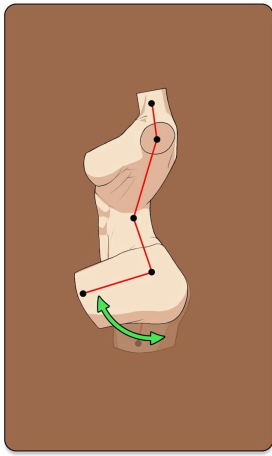
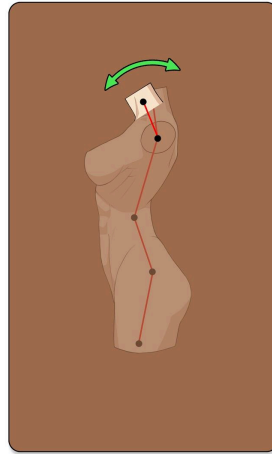
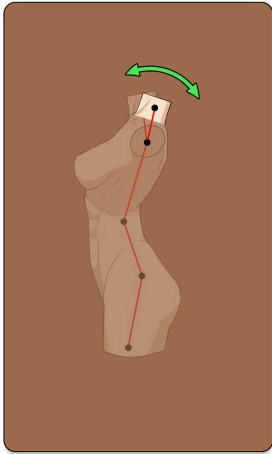


Method 2 - Hang in a Dust Bag / Storage Bag

- Place the torso inside a dust bag or storage bag.
- Zip or fasten the bag securely to prevent dust and moisture.
- Hang the bag on a floor rack or inside a wardrobe using the hook, and make sure the hook is screwed into the neck connector.
- Ensure no heavy items press on the bag and avoid dark clothing that may transfer dye.

7-Body Movement Range





8-Things to Avoid

To help maintain the appearance, texture, and functionality of your torso over time, please keep the following precautions in mind:

- **Avoid contact with TPE materials.** Silicone and TPE may react with each other, which can cause surface damage or staining.
- **Avoid clothing or accessories that may transfer dye.** Dark or poorly dyed fabrics can stain the skin, especially during long-term contact.
- **Avoid sharp objects, including fingernails.** Sharp edges may scratch or tear the surface. Handle with care during use and cleaning.
- **Avoid exposure to extreme heat or cold.** High temperatures may deform the material, while extreme cold can reduce flexibility.
- **Avoid prolonged pressure or unnatural bending.** Leaving the torso compressed or bent for long periods may affect shape and internal structure.
- **Avoid dust accumulation.** Dust and debris can adhere to the surface and affect the skin texture over time.
- **Avoid prolonged exposure to direct sunlight.** UV exposure may cause discoloration and accelerate material aging.
- **Avoid contact with pets and small children.** For safety and hygiene reasons, always store the torso in a secure, private place.

9-Warranty & Support

14-Day Hassle-Free Returns

You have **14 days from the date of delivery** to request a full refund, provided that the inner transparent plastic bag remains sealed and intact.

- Upon receiving your order, you may carefully inspect the product through the sealed bag — check the details, softness, and weight without opening it.
- If the product does not meet your expectations, simply keep the bag unopened and contact our customer service team to initiate a return.
- For hygiene and safety reasons, **returns are not accepted once the protective bag has been opened**, unless the product is found to be defective or damaged upon arrival.
- Return shipping costs are the responsibility of the customer. Refunds are processed after the product is received and inspected.

Please note: once the protective bag is opened, the product is considered accepted and non-returnable.

100-Day Quality Guarantee

We stand behind the quality of our products with a **100-day replacement guarantee**. If any manufacturing or functional defect occurs within 100 days of receipt, we will provide a free replacement.

Covered Quality Defects include:

- Structural or design flaws.
- Failure of built-in functional modules.

Not Covered (Human-Induced Damage):

- Tears, scratches, or punctures caused by rough handling.
- Corrosion or discoloration from inappropriate lubricants or cleaning agents.
- Deformation or damage caused by improper storage (heat, heavy pressure, or direct sunlight).
- Structural damage caused by unauthorized disassembly or modification.