

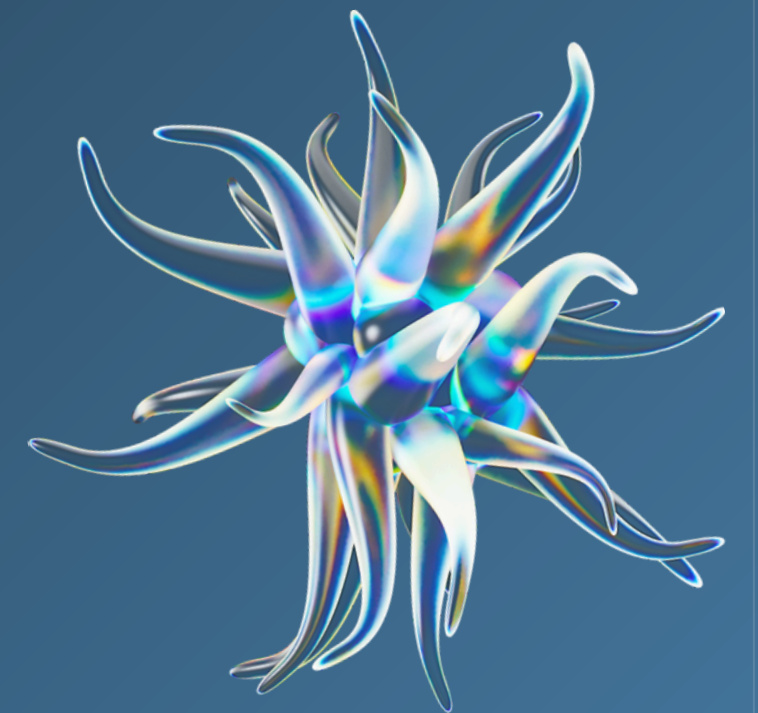
CLAIBORNE COUNTY ELECTION CRUNCH TIME

Series Three ---What the CITIZEN
SHOULD KNOW!!

Presented by:

Amanda Hamilton

Date : 06/25/2026



WHERE TO START.....

Claiborne County Mayor

In Tennessee, the role of a mayor is pivotal to the functioning and governance of municipalities and counties. Serving as the chief executive officer, a mayor's responsibilities are multifaceted, encompassing the enforcement of local laws and the management of daily government operations. One of the mayor's crucial tasks is preparing the budget, which involves allocating resources efficiently to meet the community's needs. Additionally, mayors have the authority to appoint department heads and board members, ensuring that competent individuals are in place to oversee various aspects of local government. Beyond administrative duties, mayors serve as the primary liaison between the government and its citizens, facilitating communication and addressing public concerns. Their leadership is integral to fostering community development and ensuring the effective delivery of services to residents.

Claiborne County Mayor

Key Duties

- **Chief Executive & Administrator:** The mayor directs the day-to-day operations of county or city government departments and is responsible for enforcing all ordinances and laws.
- **Financial Management:** They serve as the chief accounting/financial officer, preparing the annual budget for legislative approval, negotiating contracts, and monitoring revenues and expenditures.
- **Appointments & Oversight:** Mayors appoint department heads, statutory officers, and members of local boards and commissions, subject to confirmation by the local legislative body.
- **Legislative Role:** The mayor presides over meetings of the legislative body (like the Board of Mayor and Aldermen or County Commission). In some charter forms, they have veto power over passed ordinances

Claiborne County Mayor

Limitations of the Role

While the mayor acts as the face of the executive branch, their power is balanced by the legislative body (the city council or county commission). In county government especially, several major departments are led by independent, countywide elected officials (such as the Sheriff, County Clerk, and Trustee) whom the mayor does not supervise or direct.

Claiborne County Mayor • **Appointments & Oversight:** Mayors appoint department heads, statutory officers, and members of local boards and commissions, subject to confirmation by the local legislative body.

Common Statutory Offices

County Attorney: Serves as the primary legal advisor for the county government and its elected officials.
County Medical Examiner: Investigates deaths that occur under suspicious, violent, or unusual circumstances.

Veterans' Service Officer: Assists former service members and their families in navigating and claiming federal and state veteran benefits.

Constable: Elected law enforcement officers who primarily serve legal processes, though their exact powers can vary significantly by judicial district.

County Surveyor: Performs boundary and land surveys as requested by local courts or the county commission.

County Fire Marshal: Enforces fire and safety codes, conducts investigations into the origins of fires, and promotes fire prevention.

Delinquent Tax Attorney: Hired to represent the county in collecting overdue property taxes

Claiborne County Mayor • **Appointments & Oversight:** Mayors appoint department heads, statutory officers, and members of local boards and commissions, subject to confirmation by the local legislative body.

There is/ was a porposed Charter in Claiborne County BUT I have NOT seen a Charter Commission or RESOLUTION

In Tennessee, a charter for county government is developed by a publicly elected or appointed Charter Commission. The commission is established following the passage of a local charter resolution by the county legislative body, or via a joint resolution between the county executive and city mayors

PUBLIC OVERSIGHT and\ or UNBIASED Citizen preference

Currently, In Claiborne County we have NO PUBLIC panels, advisory groups or ethic group with citizens being nominated and seconded by County Commissioners.

Claiborne County Mayor

Successful mayors are often the linchpins of their communities, embodying a blend of leadership qualities that enable them to effectively steer their county towards growth and prosperity.

First and foremost, strategic communication is vital; mayors must be adept at articulating their vision and maintaining transparency, fostering trust through open dialogue with residents. Active listening is equally important, allowing them to understand and integrate the diverse concerns and aspirations of their constituents into actionable plans.

Collaborative leadership is another cornerstone, as it involves building strong alliances, effectively delegating responsibilities, and negotiating solutions that benefit the entire community.

Furthermore, financial and administrative know-how is essential for prudent management of municipal budgets and navigating complex government regulations.

Finally, emotional maturity is crucial, as it equips mayors with the resilience to handle public scrutiny and make difficult decisions with composure, ensuring they remain committed to serving the common good. By honing these traits and competencies, mayors can inspire confidence and effect positive change within their cities.

Make a choice by knowing



Property Taxes, Wheel Tax – **Tourism TAX ?**



Alignment of Priorities– Roads– Schools–Zoning



Are they **SILENT** keepers of the books?



Openness to PUBLIC Oversight CITIZEN Driven Government



Are they willing to WORK for the Citizens or are they seeking a paycheck with power influence

Claiborne County Mayor

What can go wrong?

Citizens will continue to pay property and extra taxes- because it easier to stay with a simple system (Lazy leadership)

Prioritization of Govt OVER citizens – Bureaucratic Self-Preservation

Loss of Accountability Governments may limit transparency and weaken civic engagement, making it difficult for everyday people to influence decision-making

Economic disparity over the County – Loss of Housing and work force

Concentrated Elitism– Good Ols Boys Club – Only passing things that benefit small circles- family- friends- neighbors of certain communities.

CLAIBORNE COUNTY COMMISSIONERS

Tennessee county commissioners serve as the chief legislative and policy-making body for their local county governments. Their primary responsibilities include passing local resolutions and ordinances, adopting the annual operating and capital budgets, setting the county property tax rates, and overseeing zoning regulations and building codes for unincorporated areas

CLAIBORNE COUNTY COMMISSIONERS

- **Budgeting and Finances:** They adopt the annual county fiscal budget, appropriating funds for county operations, schools, and highways.
- **Setting Tax Rates:** They determine and set the local property tax rates needed to fund those services.
- **Legislation and Zoning:** They enact local resolutions and ordinances, and they approve zoning and building codes for areas outside incorporated city limits.
- **Appointments:** They appoint citizens to serve on various local boards, commissions, and committees.
- **Infrastructure and Services:** They authorize capital projects, bond issues, and maintain general oversight over public works, county buildings, and record keeping

CLAIBORNE COUNTY COMMISSIONERS

- **Citizen Driven – Citizen Safety**
- Knowledge of Zoning and How to make POLICY that Citizens want the County to follow–ex Agriculture/ Soil / Water Conservation/
- **How to make policies or zoning that inhibit harmful industry NDAs**
- **Understand & Researched the population, incomes and know sources/ services currently utilized and where needs lie.**
- **The ability to familiarsize with parliamentary procedure and actually involve and use citizen committees.**
- **Be available and make initiatives to see what people in your DISTRICT value. NOT just at election**
- **Know Healthcare and Public services and where they are in our stateof TN– Claiborne County – we have many below poverty**
- **Know what a HOME RULE is and why**

CLAIBORNE COUNTY COMMISSIONERS

The NUMBER ONE - What can wrong if County Commissioners are unethical?

Degraded PUBLIC SERVICES

Stagnation in Economic Growth

Local Government is perceived as untrustworthy, severely biased and

EDUCATION

IS LOW on

funding \

Teacher Salary

and LOW on

Ranking



inefficient

Claiborne Co

is in the TOP

(10)TEN

Poorest

Counties of

TN



Claiborne Co

is in 79th

In healthcare

for Counties

of TN



CLAIBORNE COUNTY COMMISSIONERS

Degraded PUBLIC SERVICES

Stagnation in Economic Growth

Local Government is perceived as untrustworthy, severely biased and inefficient

These are measurable outcomes to KNOW!



**Ranks 84th
out of 95
Counties for
median
household
income**



**Claiborne Co
has been
holding steady
at 2025 3.5%
to 2026 3.6%
unemployment**




**Claiborne Co
is considered
Distressed by
the
Appalachian
Regional
Commission**

CLAIBORNE COUNTY COMMISSIONERS


Degraded PUBLIC SERVICES

Stagnation in Economic Growth

**Local Government is perceived as untrustworthy,
severely biased and inefficient**

 The area has
seen FBI
presence and
investigations
into CC Sheriff's
office. Police
Scorecard is
only at 47%
accountability

 Long -time
Sheriff David
ray has long
standing - long
career of
corruption

 Regional attorneys and
civil advocates, such
as those analyzing
legal fairness in East
Tennessee, have
highlighted the
county's court and
judicial systems as
being
problematic. Claiborne
Co is considered
Distressed by the
Appalachian Regional
Commission

THE GOOD NEWS IS WE HAVE A LOT OF
CITIZENS SHOWING UP AND CONTRIBUTING
TO
CHANGE.....

CLAIBORNE COUNTY SHERIFF

The Claiborne County Sheriff's Department in Tennessee is the county's chief law enforcement agency, responsible for maintaining public safety, operating the county jail, serving legal processes, and providing security for local courts.

Law Enforcement & Patrol

Patrolling: Conducting patrols across county and state roadways to deter criminal activity.

Crime Investigation: Investigating crimes against persons and property, gathering evidence, and apprehending suspects.

Maintaining Peace: Suppressing riots, unlawful assemblies, and breaches of the peace as the conservator of the county

Court & Judicial Services

Court Security: Providing personnel to attend court sessions, ensure courtroom order, and maintain the security of the courthouse.

Serving Warrants: Executing and serving legal documents, including civil and criminal warrants, subpoenas, and court orders.

Executing Judgments: Levying property or assets to satisfy court-ordered judgments.

Corrections & Jail Administration

Inmate Custody: Managing the Claiborne County Jail and supervising its incarcerated population.

Transportation: Safely transporting prisoners to and from court appearances, medical facilities, or other correctional institutions.

CLAIBORNE COUNTY SHERIFF

Key Qualities to Look For

Resource Management & Fiscal Acumen

Budget Maximization: Rural departments often face tight budgets. Look for a candidate who can secure grants, prioritize essential needs (patrol vehicles, reliable communication systems), and avoid budget waste.

Jail Operations: Sheriffs are responsible for the county jail. A good sheriff must ensure the facility is run humanely, meets state, and handles medical/mental health needs appropriately

Hands-On Policing & Adaptability

Well-Rounded Expertise: Rural deputies rarely have specialized units. The ideal sheriff understands how to manage everything from traffic enforcement and property crimes to search and rescue operations.

Mutual Aid: Since backup can sometimes be 30+ minutes away, the sheriff should have strong relationships with surrounding agencies (e.g., Highway Patrol, neighboring county offices, and local police)

Community-Focused Leadership

Accessibility: The sheriff should be visible, approachable, and willing to listen to local concerns at community meetings.

Transparency: An effective sheriff keeps the public informed about crime trends, department policies, and how taxpayer funds are allocated. [1, 2]

CLAIBORNE COUNTY SHERIFF

Specific qualities and legal standards to avoid include:

Criminal History: Candidates with records of perjury, theft, drug manufacturing or distribution, and violent crimes are disqualified from holding office.

Corruption and Deception: A history of lying, falsifying documents, or abusing authority for personal gain. **OR HIRES PREVIOUSLY DISMISSED DEPUTIES**

Political Policing: Sheriffs who enforce laws based on personal political preferences rather than upholding the Constitution and the law for all citizens equally.

Financial Mismanagement: Inability or unwillingness to operate the county jail and departmental budget responsibly, which can lead to unsafe conditions or liability for the county.

Discriminatory or Biased Behavior: Any past disciplinary action for abuse of power, racism, or discriminatory behavior - **ALSO WATCH WHO MENTORED THEM-**

Claiborne County Sheriff

The consequences of a corrupt sheriff's department are profound and far-reaching, impacting both individuals and the community as a whole. Systemic breaches of civil rights occur as officers may engage in unlawful activities such as racial profiling, excessive use of force, and unlawful searches, eroding the very protections meant to safeguard the populace. Financially, corruption can lead to misallocated resources, legal settlements, and increased costs associated with investigations and reforms, burdening local governments and taxpayers. This financial strain often diverts funds from essential services like education and infrastructure. Most critically, the breakdown of community trust can be devastating. When law enforcement is perceived as corrupt, citizens may become reluctant to cooperate with police, report crimes, or participate in community policing efforts, leading to a rise in crime and a feeling of insecurity. Rebuilding trust requires transparency, accountability, and consistent efforts to demonstrate integrity and fairness within the department.

Claiborne County Sheriff

Measurable outcomes for a county sheriff are quantitative and qualitative metrics used to evaluate operational effectiveness, public safety, fiscal responsibility, and jail management. They fall into four primary categories: Crime Reduction, Jail & Inmate Operations, Court Security & Civil Processes, and Community Engagement

Crime Reduction & Public Safety.

what citizens can measure

Crime Rates: Percentage decrease in the local index of violent and property crimes (e.g., tracking the Total Crime Index per capita).

Response Times: The average duration from emergency dispatch to arrival at a scene, typically measured in minutes for Priority 1 (emergency) calls.

Clearance Rates: The percentage of reported crimes that result in an arrest or case closure.

Traffic Safety: The number of citations issued, DUI arrests, and a comparative reduction in traffic fatalities or accidents on county roadways. [1]

Claiborne County Sheriff

Measurable outcomes for a county sheriff are quantitative and qualitative metrics used to evaluate operational effectiveness, public safety, fiscal responsibility, and jail management. They fall into four primary categories: Crime Reduction, Jail & Inmate Operations, Court Security & Civil Processes, and Community Engagement

Jail Management & Corrections what citizens can measure

Recidivism Rates: The percentage of released inmates who are re-convicted of a new crime within a set timeframe (e.g., 1 to 3 years).

Inmate Healthcare & Safety: The number of medical emergencies, incidents of contraband confiscated, or successful accreditations obtained from agencies like the National Commission on Correctional Health Care.

Rehabilitation Participation: The number of inmates completing educational programs, vocational training, or mental health/substance abuse treatments.

Staffing Levels: Overtime costs compared to budget, and the percentage of vacant correctional or deputy positions filled

Claiborne County Sheriff

Measurable outcomes for a county sheriff are quantitative and qualitative metrics used to evaluate operational effectiveness, public safety, fiscal responsibility, and jail management. They fall into four primary categories: Crime Reduction, Jail & Inmate Operations, Court Security & Civil Processes, and Community Engagement

Court Security & Civil Processes

what citizens can measure

Process Service Rates: The percentage of civil papers (subpoenas, warrants, evictions) successfully served within statutory deadlines.

Security Incidents: The number of prohibited items confiscated and the zero-incident rate for courthouse altercations.

+123-456-7890

Inmate Transportation: The number of prisoners delivered to court appearances on-time and without escape.

www.reallygreatsite.com

Claiborne County Sheriff

Measurable outcomes for a county sheriff are quantitative and qualitative metrics used to evaluate operational effectiveness, public safety, fiscal responsibility, and jail management. They fall into four primary categories: Crime Reduction, Jail & Inmate Operations, Court Security & Civil Processes, and Community Engagement

what citizens can measure

Community Engagement & Administration

Community Outreach: The volume of neighborhood watch programs, citizen academies, or youth mentorship events hosted.

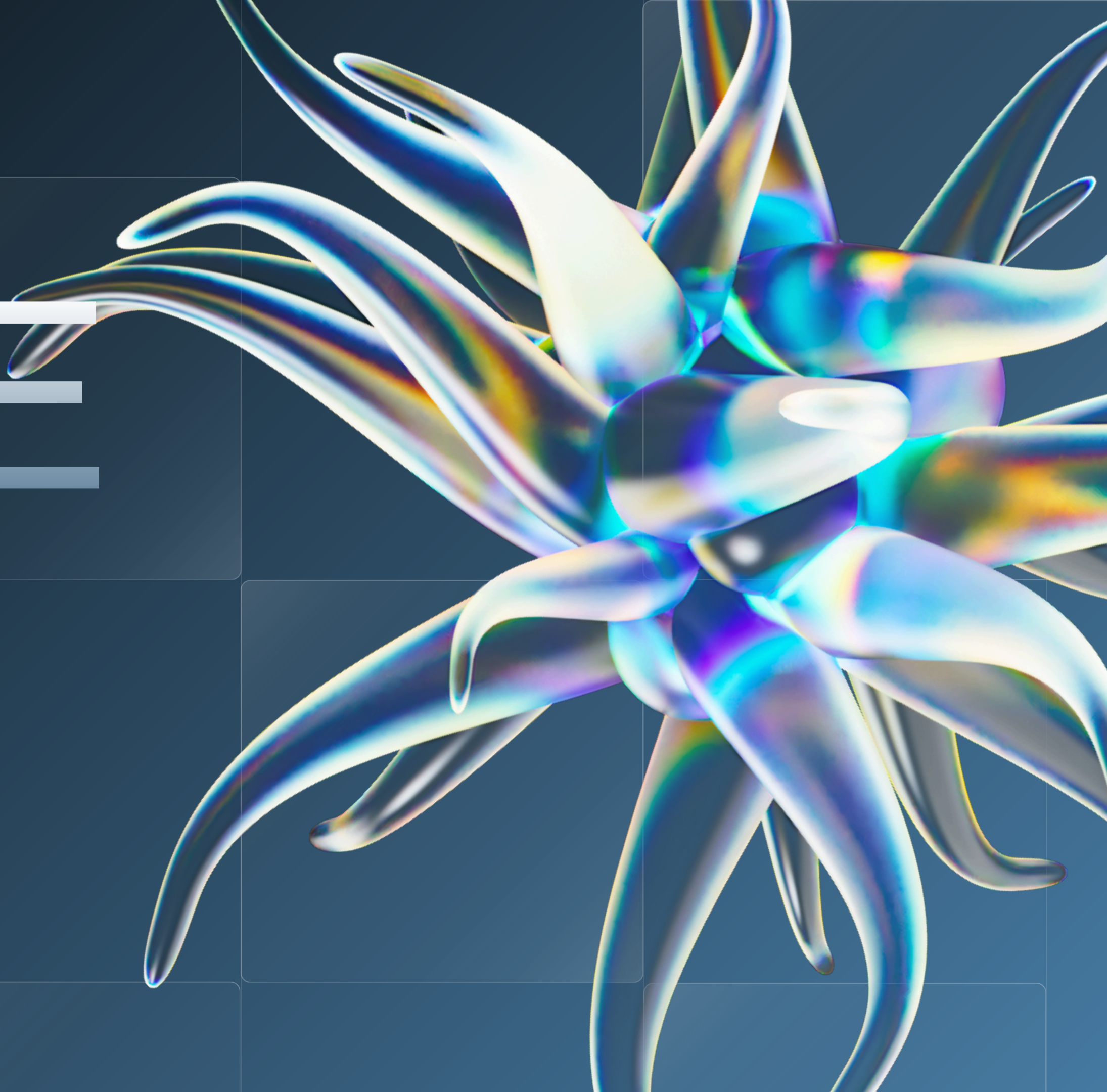
+123-456-7890

Budget Variance: Managing operational costs within the allocated county budget, minimizing lawsuits, and passing external audits

www.reallygreatsite.com

PLEASE

VOTE



THANK

YOU !

